



# ECO-Tourer

The amazing new EcoTourer is a low, aerodynamic styled folding caravan. It converts to a spacious solid wall caravan in only seconds. Double bed and single bed versions are available. The internal layout is designed for optimum weight distribution and also for maximum bench space and living area. The exciting exterior styling is continued inside with a moulded ceiling and moulded overhead cupboards - similar to that of a luxury motor yacht. The EcoTourer takes the traditional caravan to a new level of touring comfort and enjoyment.



[www.ecotourer.com.au](http://www.ecotourer.com.au)

**CARAVAN WORLD** "Not only is the Eco-Tourer Slipstream simply beautiful - inside and out - it works brilliantly, living up to the makers claim that it represents a new era in touring." *Caravan World Magazine April 2003*

**Caravan & motorhome** "Worth buying? Absolutely - it looks good on the road, handles well and is incredibly comfortable." "The Eco Tourer is taking Australian Caravan design into the 21st century" *Caravan & Motorhome Magazine June 2003*



- Hot dipped galvanised chassis
- Radio CD player
- Foldup A-frame (saves 0.9m in length)
- Aerodynamic and lightweight
- Carefully designed weight distribution
- Low centre of gravity
- Fully insulated
- Flush mount stove & sink with glass lids

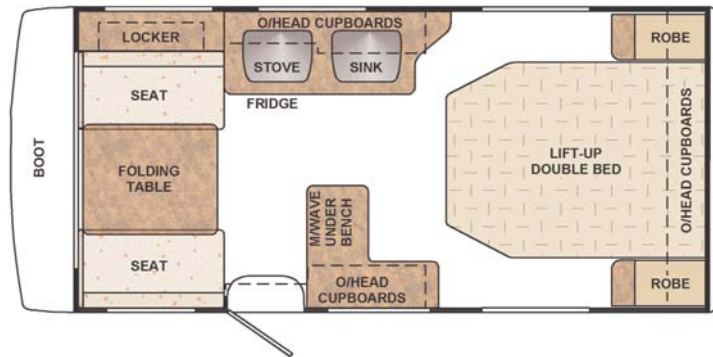
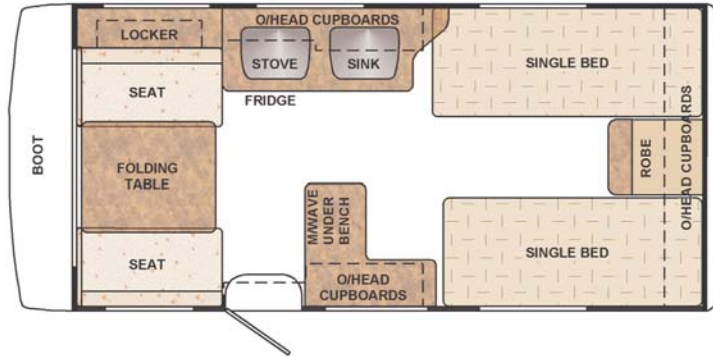
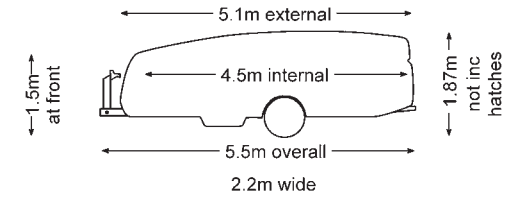
- Two gas bottles in a side locker
- Cutaway rear underside
- Widetrack axle
- Large front boot
- 12v lighting
- Microwave oven
- Ergonomic seat cushions

## OPTIONS

- Rollout awning / annexe
- Air conditioner
- Battery system / solar panel
- Off highway chassis

## SPECIFICATIONS

- Tare weight 1300 kg approx.
- Ball weight 140 kg approx.



Dual 4kg gas cylinders stored in a side locker.



Kitchen with gas stove, sink, 3 way 90 litre refrigerator, drawers and cupboards.



Rear double bed with side robes, side dressing tables and overhead cupboards.



Buffet with microwave oven, large pot drawer, pantry and cupboards.



Moulded fibreglass overhead cupboards with gloss white doors.



The standard configuration includes five drawers, two robes, five cupboards, eight overhead cupboards, two drop down flaps and a storage locker behind the seat.



Front cafe style seating with dual density seats. The table folds back to half size if required.



Large front boot

# ECO-Tourer